

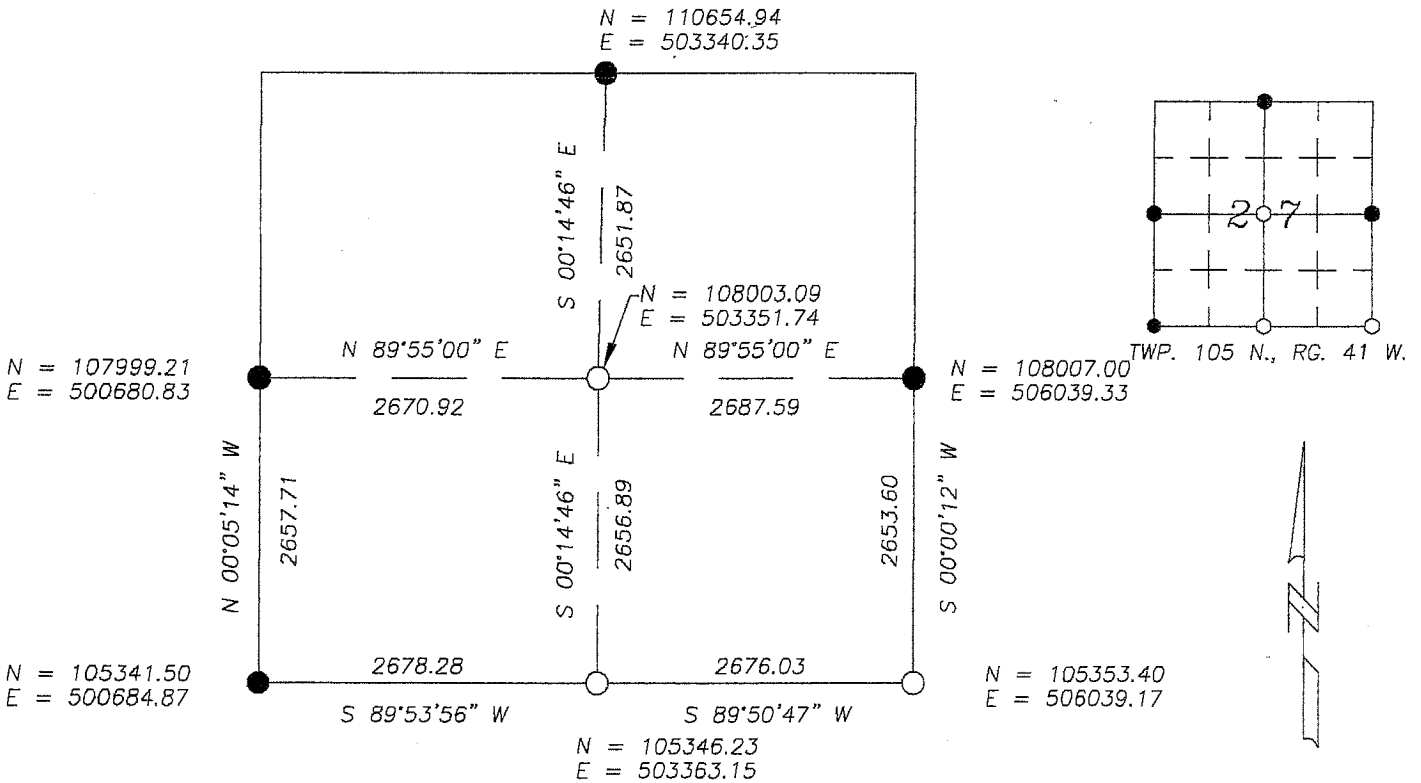
UNITED STATES PUBLIC LAND SURVEY CORNER CERTIFICATE FOR

Land survey monuments situated in Section 27, Township 105 North, Range 41 West, of the Fifth Principal Meridian, Murray County, Minnesota..

Previously recorded in N/A in County Recorder's Office.

(Show reason for preparing this certificate, the evidence and detailed procedure used in establishing the corner position & monumentation found or placed.)
 MONUMENT DESCRIPTION AND REMARKS: On July 8, 2013 we dug with backhoe & found a 10" X 10" stone 1.7' below surface at centerline of Township Road in line with fenceline South; Old notes from 1902 didn't show what was set or found but gave distance SW corner to South 1/4 Corner at 2676' & we measured 2678.28' (2' diff.) I accepted stone as corner & set survey marker with cap 23008; Also dug at SE corner & found 6" X 6" concrete cylinder as per 1934 notes set by F.A. March; I accepted concrete cylinder as corner & set survey marker with cap 23008; I also set 5/8" Iron stake with survey cap at center of Section by intersection of opposite quarter corners as per PLS instructions.

MURRAY COUNTY COORDINATES NAD-83 (2007) PLAN-VIEW



I hereby certify that this land survey, plan, or report was prepared by me and under my direct supervision and that I am a duly licensed Land Surveyor under the laws of the state of Minnesota.



Corners to be Indexed			
Corners	Section	Township	Range
S 1/4	27	105	41
SE	27	105	41
CTR.	27	105	41

Signature Perry L. Zieske Typed or Printed Name: Perry L. Zieske
 Date 7-15-13 Reg. No.: 23008

JUL 17 2013
James V. Johnson